

65-5

No. 549

October Term, 1922.

In the
Supreme Court of the United States

Pennsylvania Coal Company

Plaintiff-in-Error,

vs.

H. J. Mahon and Margaret Craig Mahon

Defendants-in-Error.

Donor P.V. Mattes

MINE Caves
Hyde Park circa 1922

In Error to the Supreme Court of Pennsylvania

**Exhibits in connection with Brief of
the City of Scranton, Intervenor**

This envelope contains exact copies of the photographic representations of conditions in the mine cave areas which were in the hands of every representative and senator of the Pennsylvania Legislature during the hearings on the Kohler Bill.

PHILIP V. MATTES,
City Solicitor,
For the City of Scranton.

HOUSER PROPERTY WRECKED BY GAS EXPLOSION FOLLOWING MINE CAVE



Photo by Anselman & DeWitt

This property nearly adjoins the Park Theater, Scranton, Pa. It was demolished by an explosion of gas following a mine cave and the result thereof, a few minutes after the theater audience had been dismissed.

AN OPPORTUNE HOUR OF DISASTER SAVED HUNDREDS



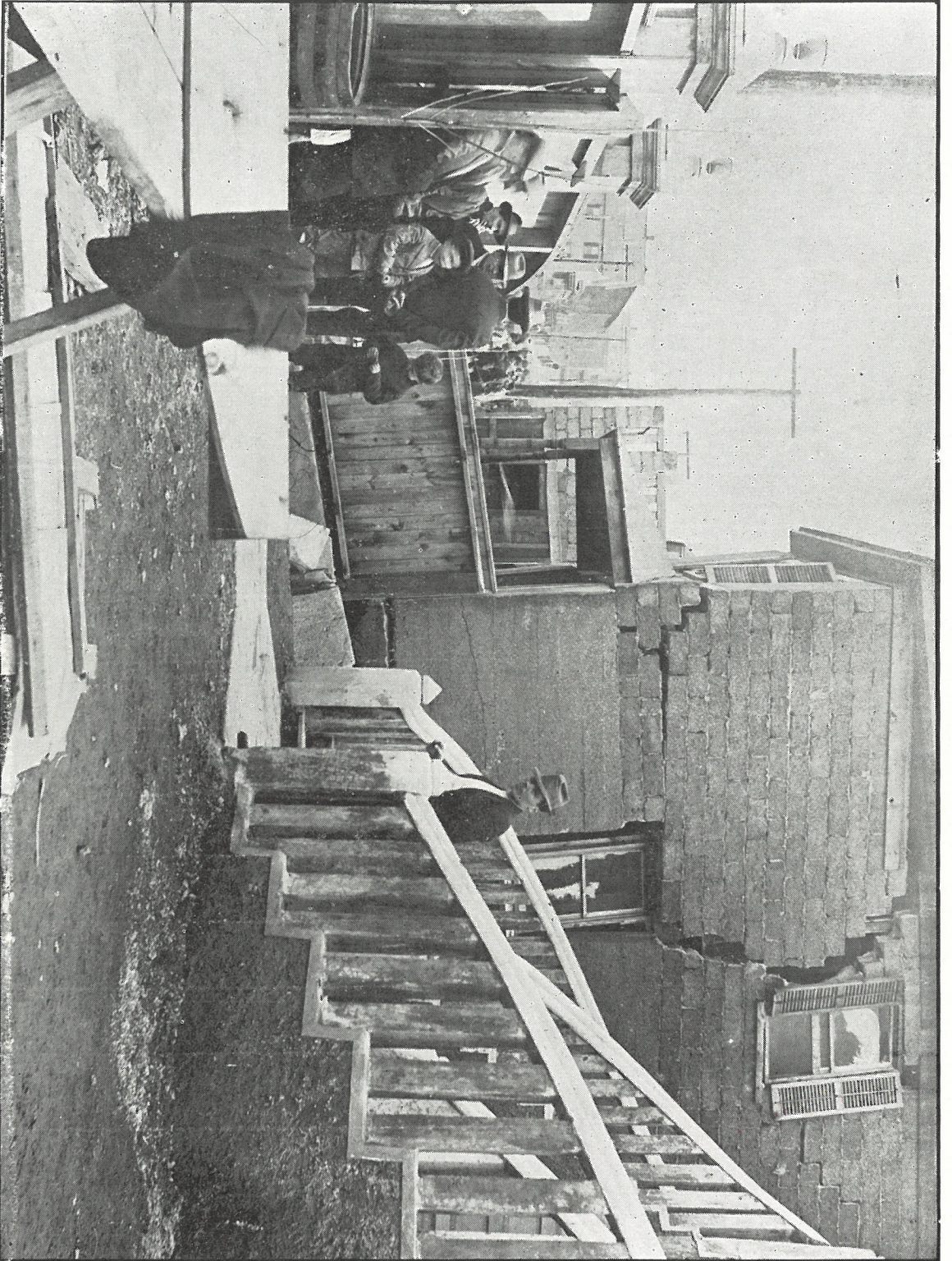
The World Theatre, Scranton, Pa., wrecked by a mine cave shortly after the audience had been dismissed for the night. Had this occurred shortly before the time of the collapse of the building, hundreds of lives would have been sacrificed to the greed of mining operators, now seeking to avoid remedial mine cave legislation.

THE FORERUNNER OF RUIN



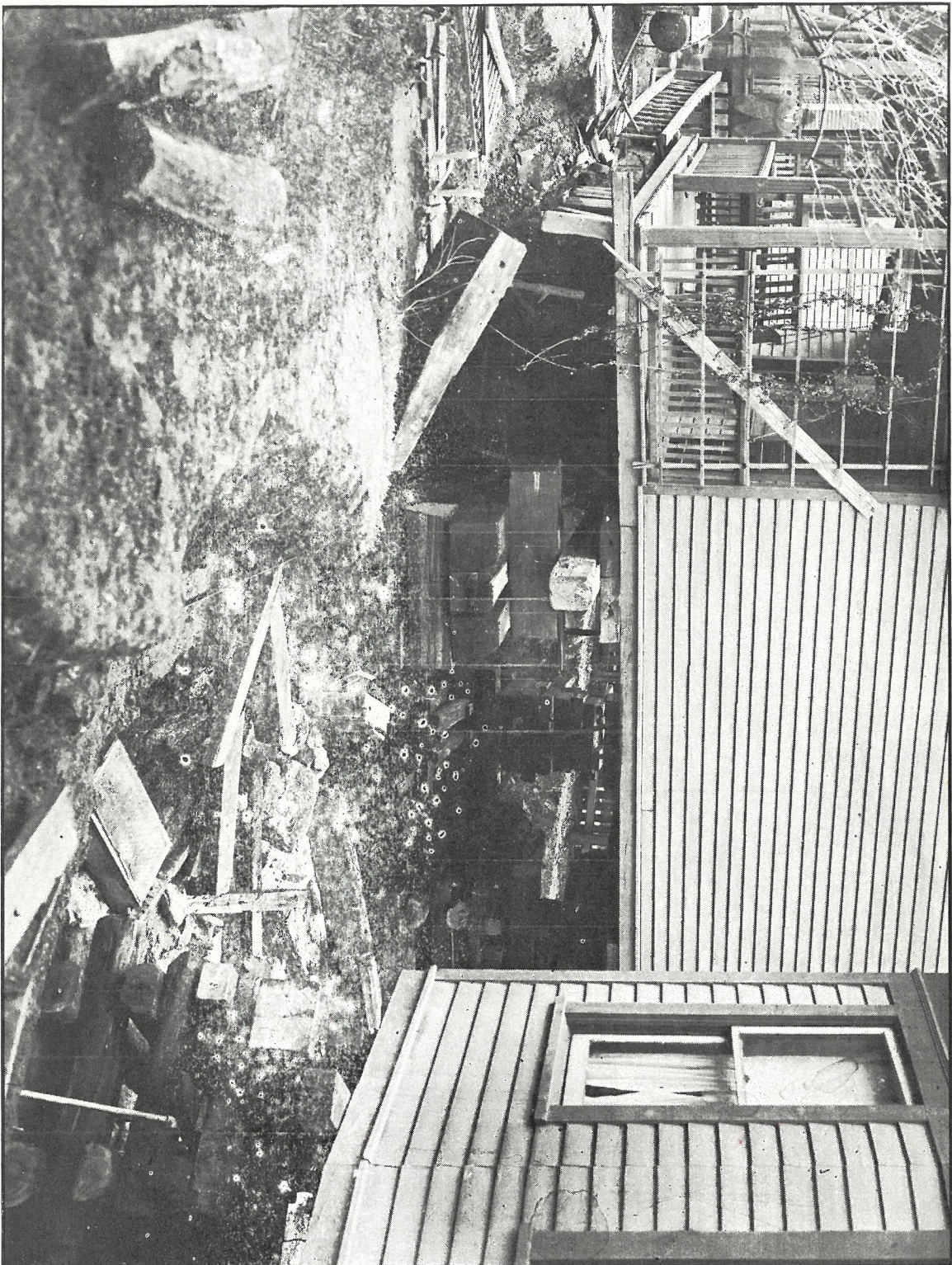
The home of Michael Crane, Ripple Street, Scranton, Pa., just as the surface began to settle.

HOME ON RIPPLE STREET, SCRANTON, PA., WRECKED BY MINE CAVE



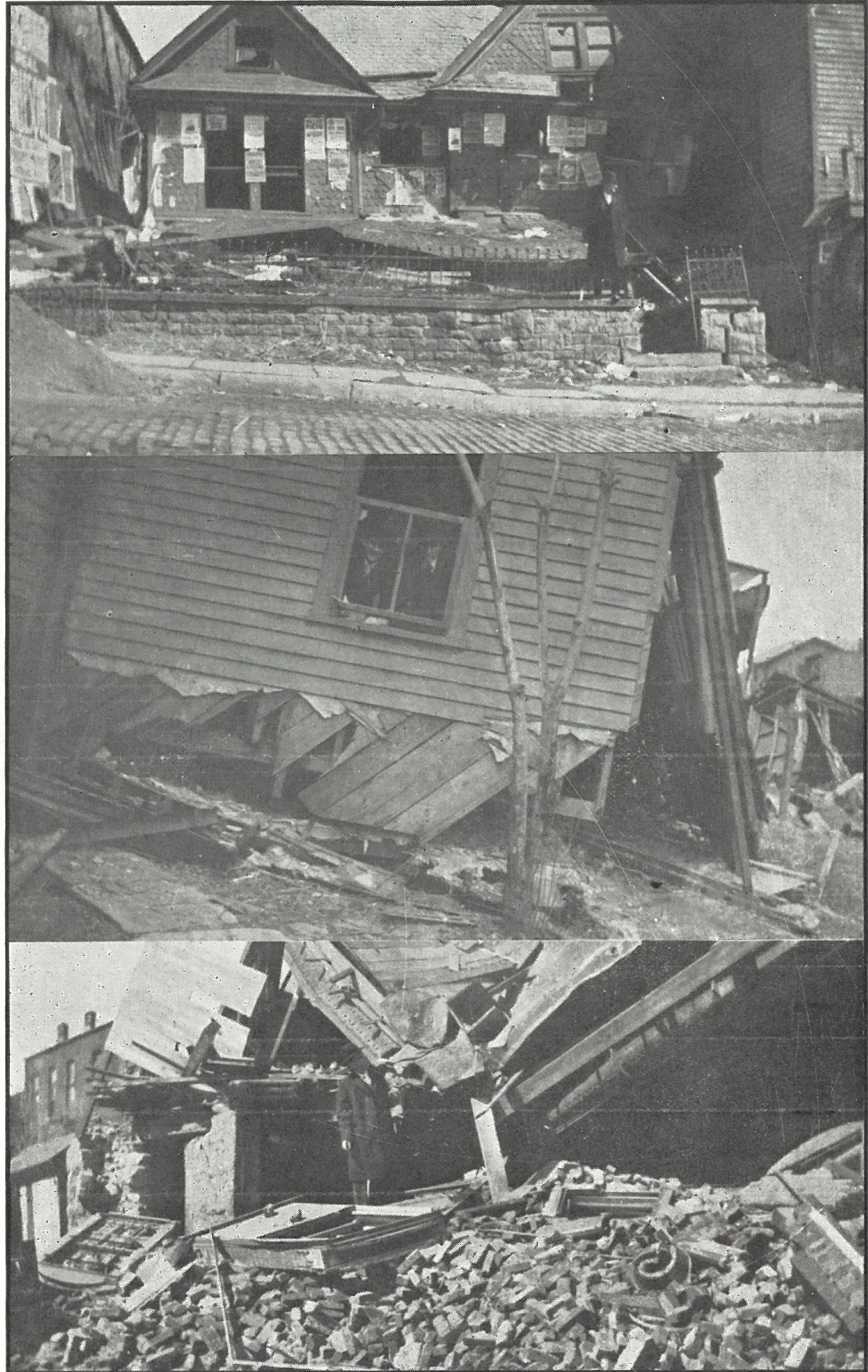
Another family driven into the street as a result of a mine cave such as menaces the life of the people in the anthracite region.

THE PROSSER FAMILY HOME, NORTH SUMNER AVENUE, SCRANTON, PA.



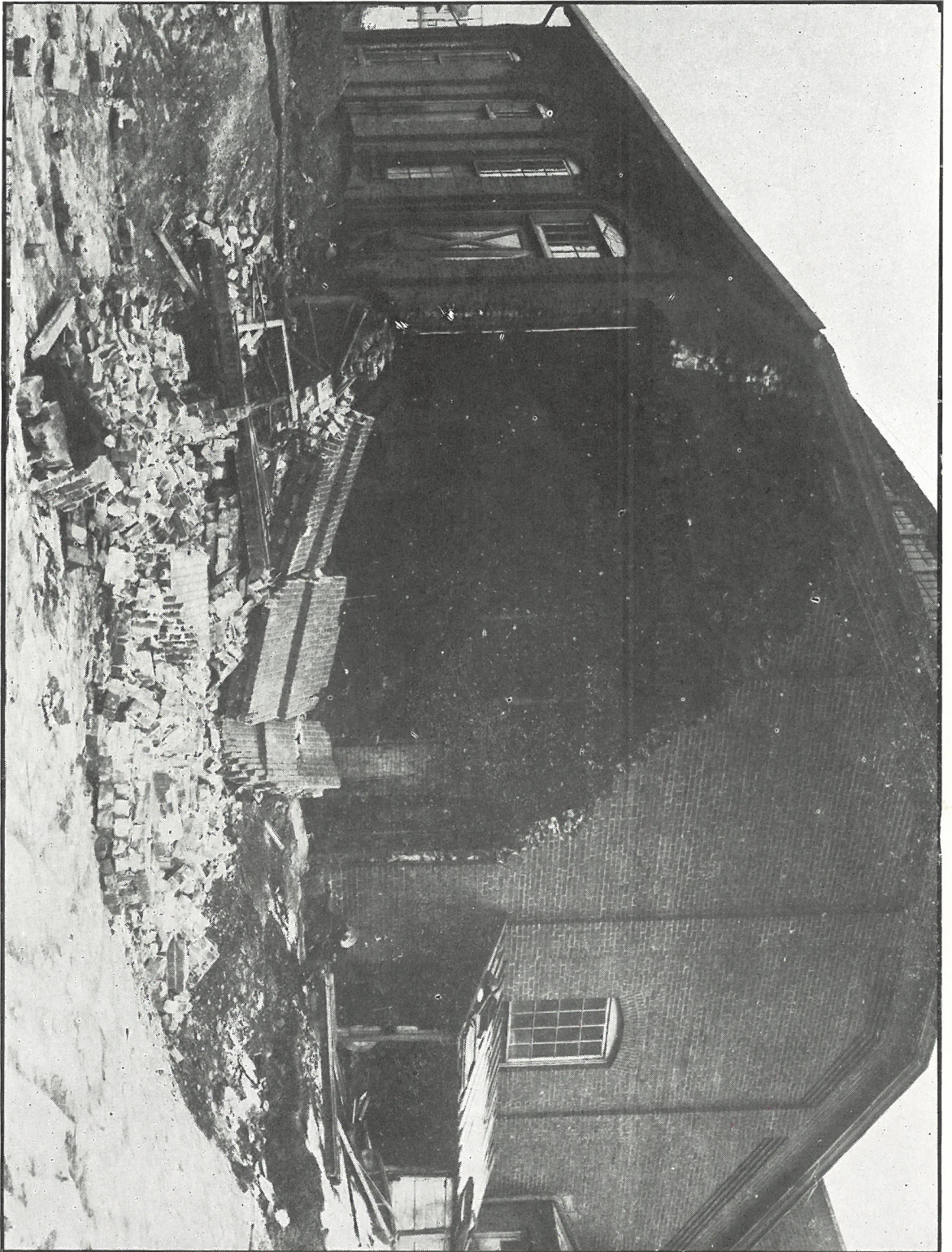
Extensive timbering being done to save the home of Mr. Prosser at Scranton after a mine cave had dropped the surface beneath the property. This is within a hundred feet of where Robert Warburton, aged 12 years, lost his life when the surface dropped and he was engulfed in a deep mine cave pit.

THREE GENERAL VIEWS OF MINE CAVE HAVOC, SCRANTON, PA.



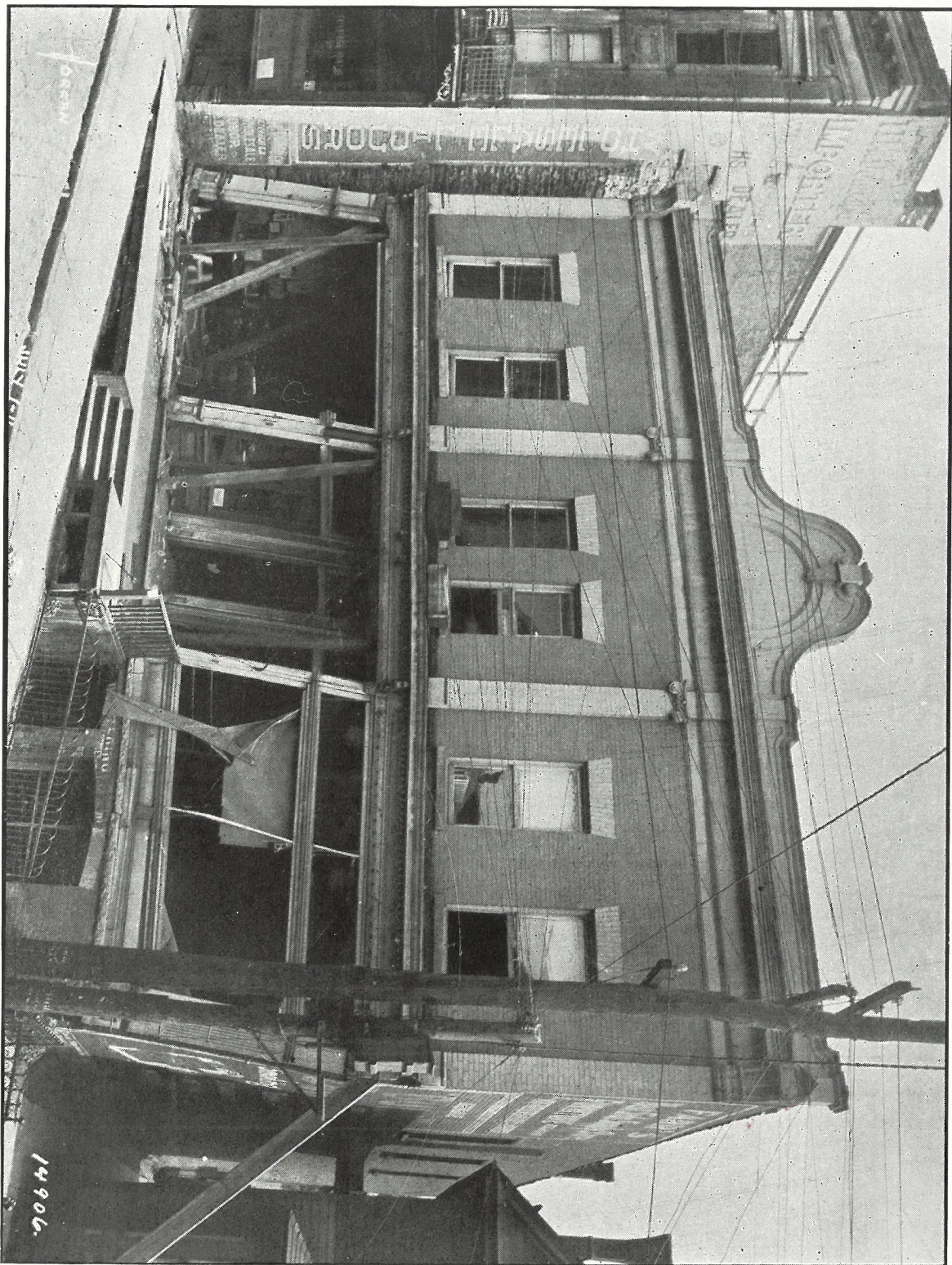
The above pictures are typical of mine cave havoc in Scranton, Pa., where the people are insisting upon remedial legislation in order to protect their lives and their property.

ONE OF SOUTH SCRANTON'S INDUSTRIAL PLANTS WRECKED



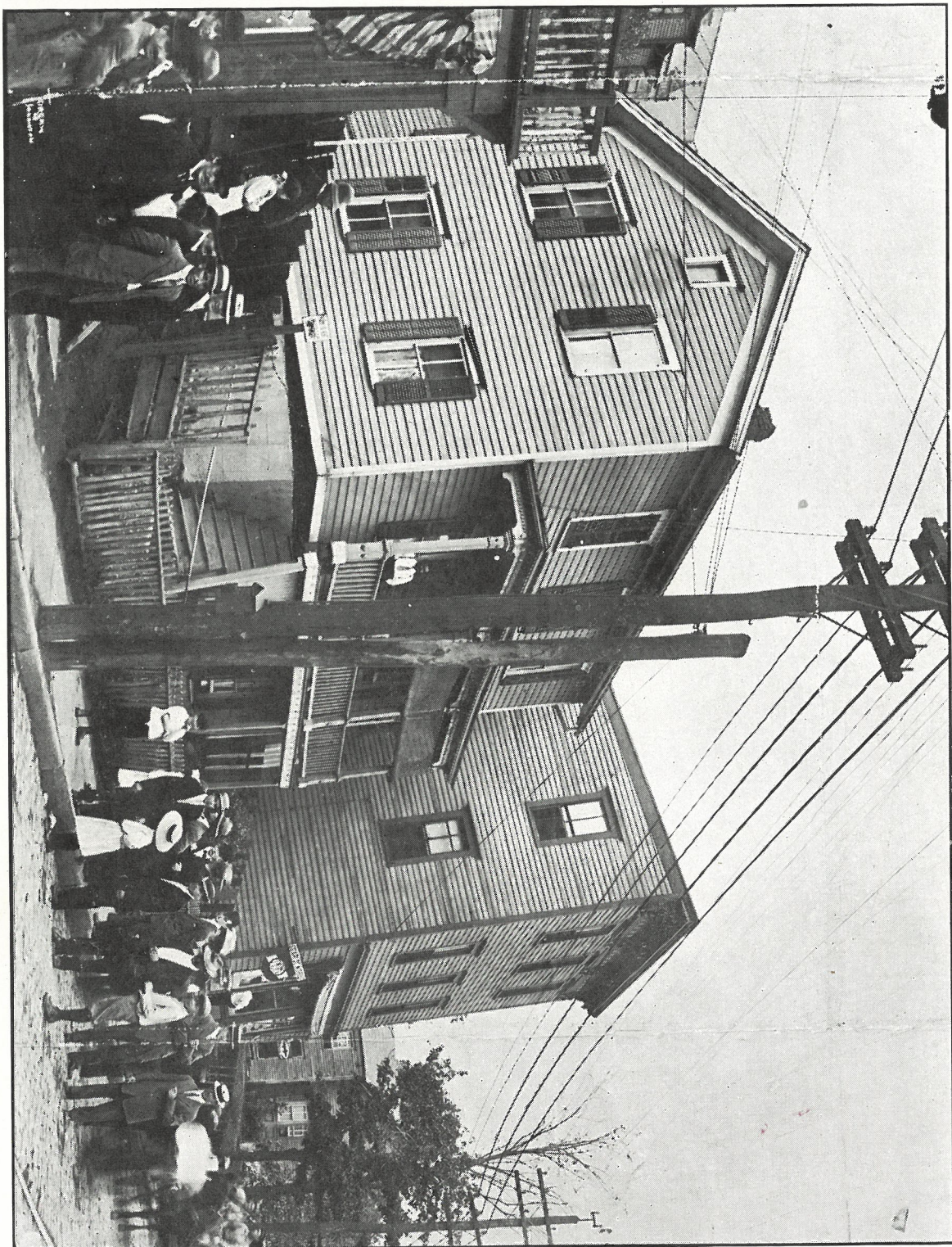
A mine cave almost completely wrecked this big industrial plant in South Scranton. The property damage was great and many were thrown out of employment.

EX-CONGRESSMAN JOHN R. FARRS PROPERTY DEMOLISHED



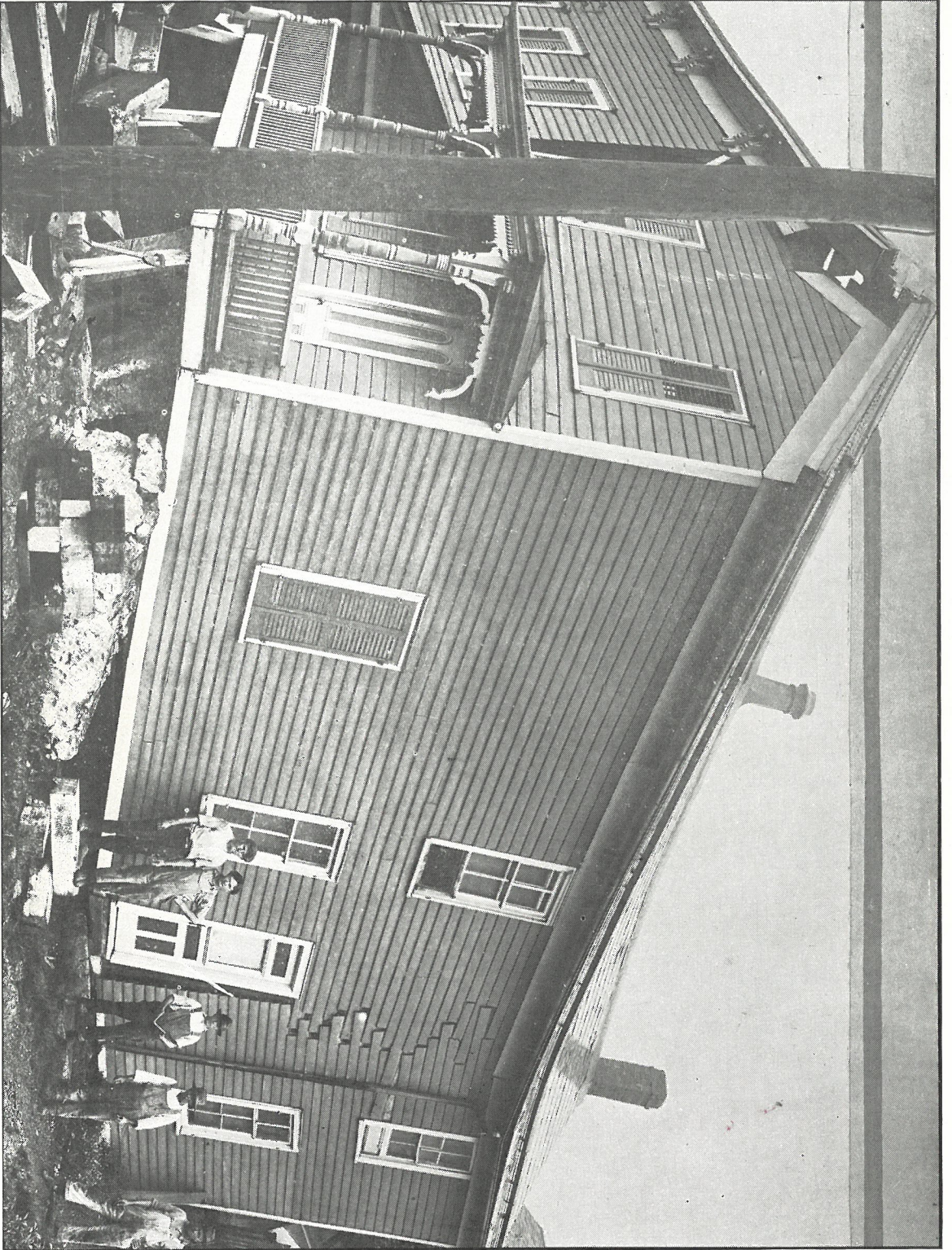
West Lackawanna Avenue, Scranton, Pa., property completely demolished by a mine cave.
This building has since collapsed into a pile of wreckage.

SCRANTON FAMILIES DRIVEN INTO THE STREET BY MINE CAVE



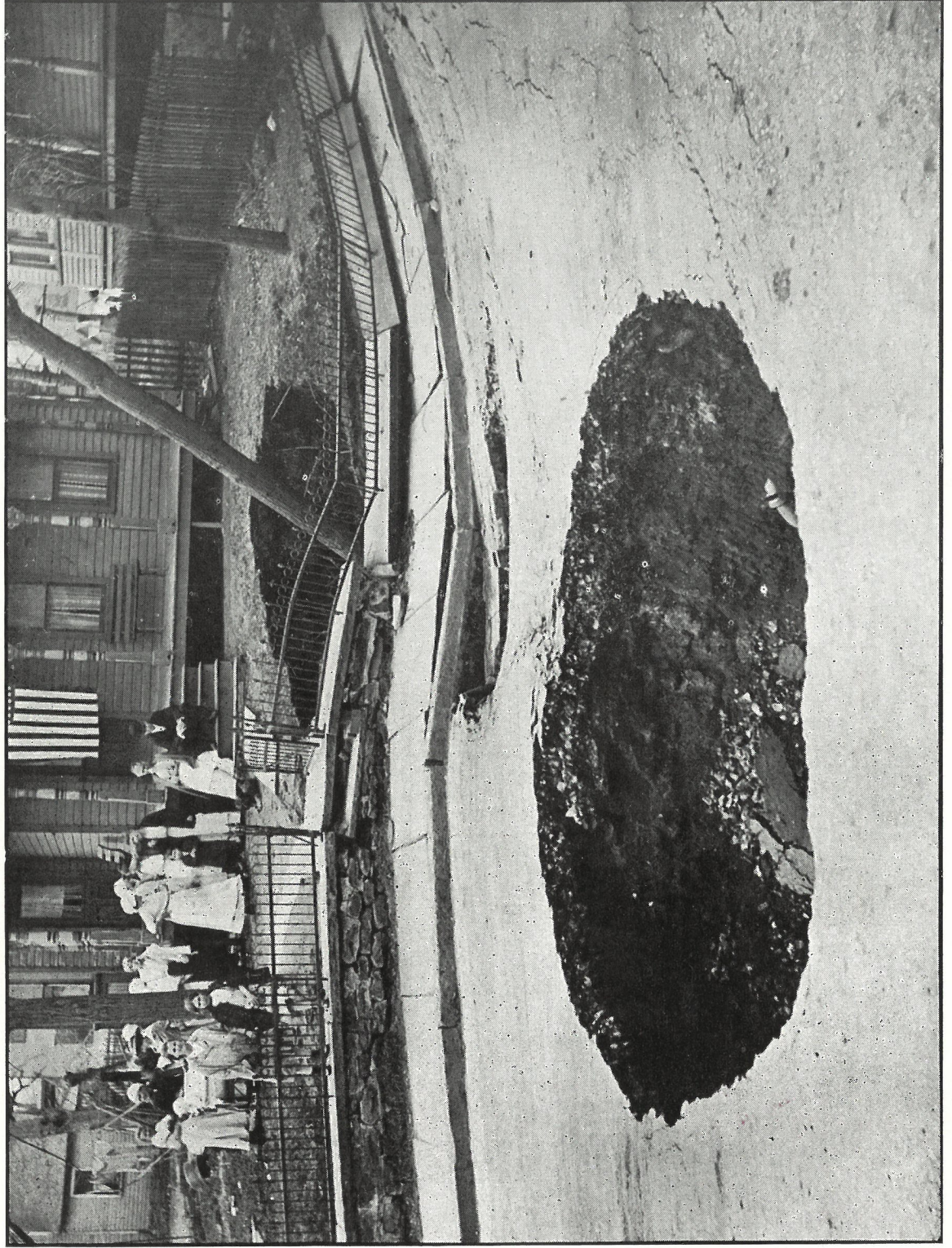
Scene along Robinson Street, West Scranton, where many homes have been wrecked by ruthless mining operations.

THE LAVELL FAMILY HOME FOLLOWING A MINE CAVE



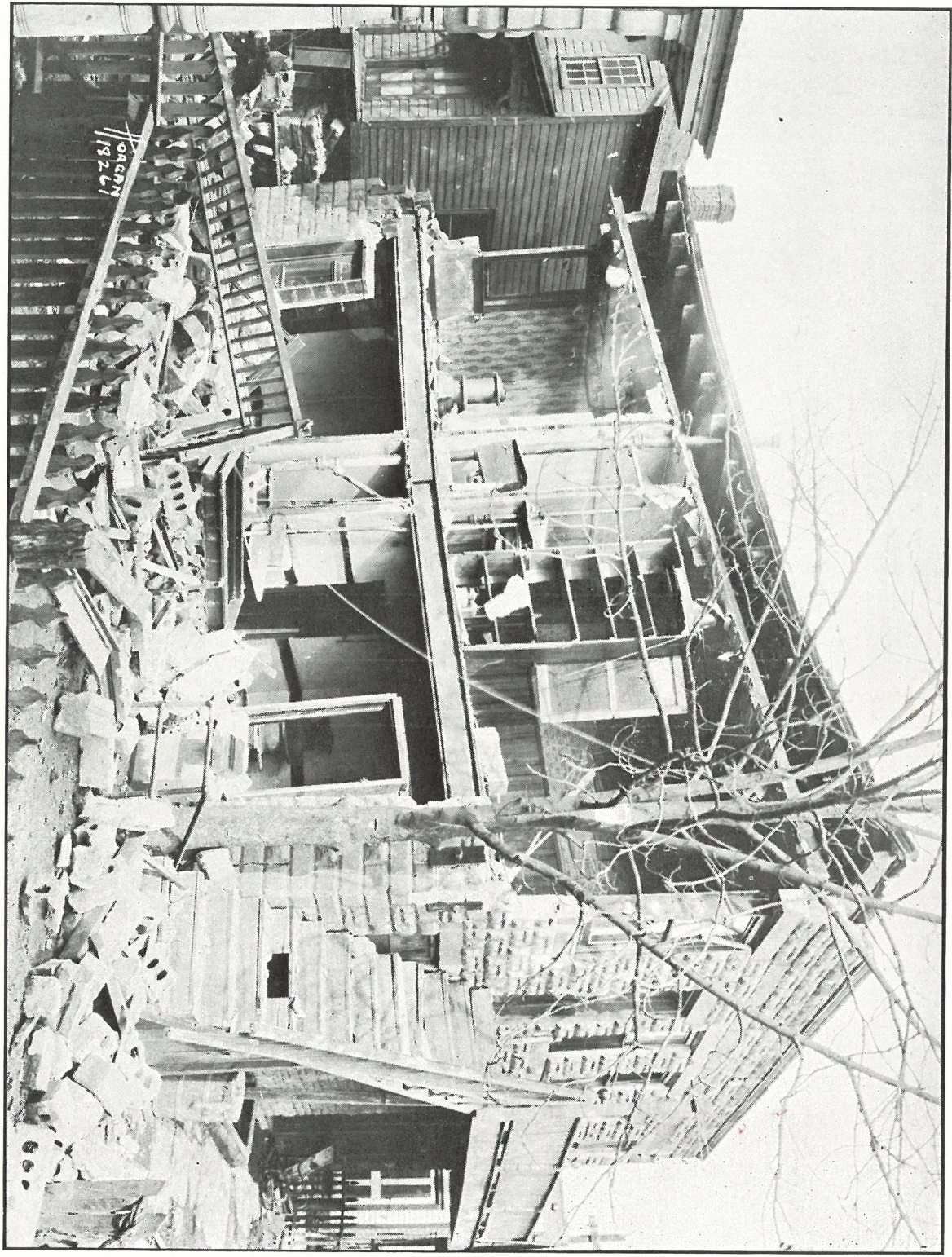
This Scranton, Pa., family were driven into the street because of a mine cave that wrecked their home.

WHAT A FIRE TRUCK, RESPONDING TO AN ALARM, JUST MISSED



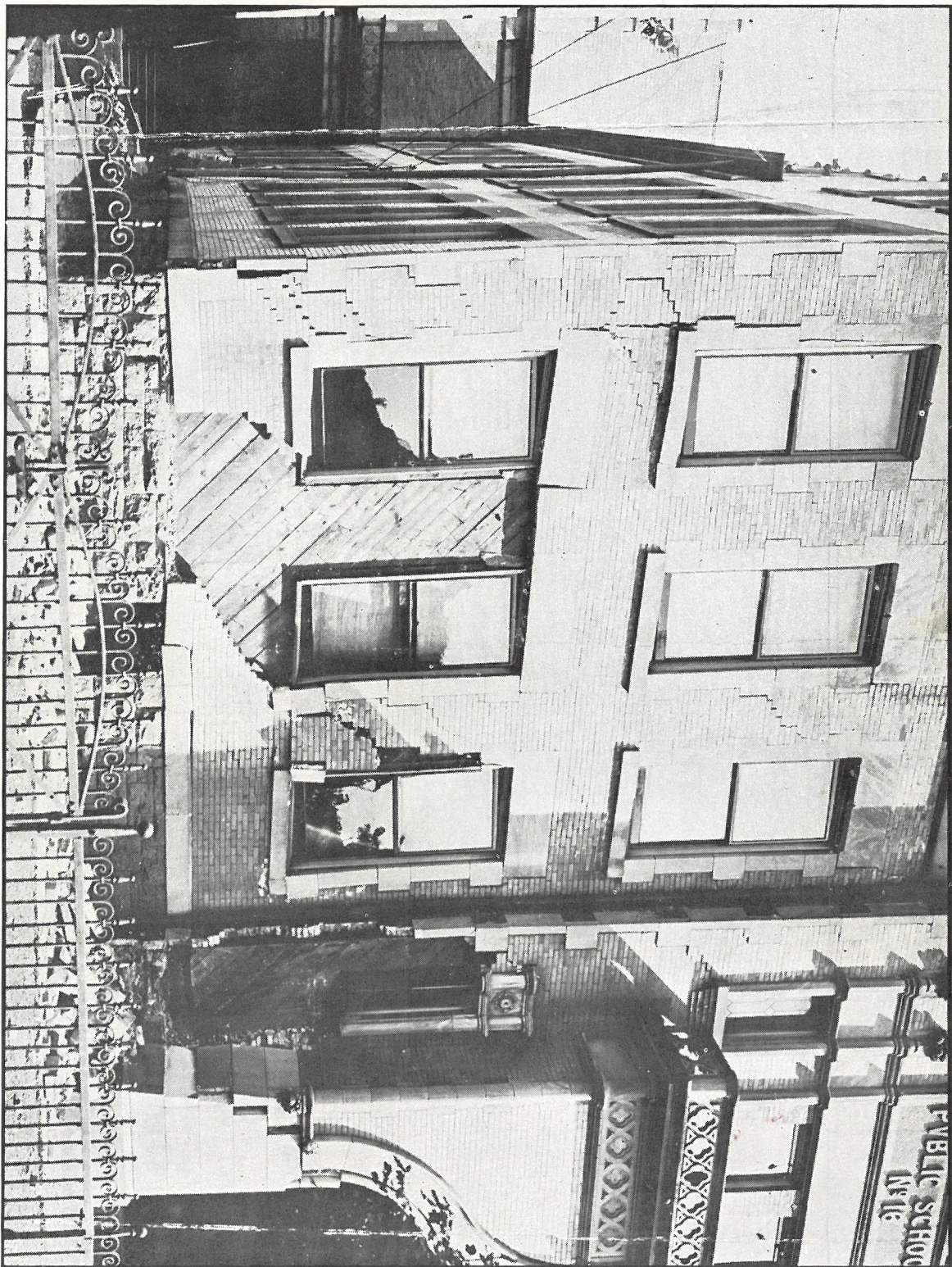
While responding to a fire alarm, William Frey, of Taylor, Pa., near Scranton, Pa., a truck driver, just missed dropping the fire fighting apparatus into this 30-foot pit on a main thoroughfare. Quick action on the part of the driver saved the lives of these firefighters.

FRONT OF FOUR-FAMILY BUILDING COLLAPSES AS RESULT OF CAVE



A concrete block apartment in Scranton, Pa., collapses as a result of a mine cave at 1 o'clock in the morning, driving all occupants into the street.

NO. 16 PUBLIC SCHOOL, SCRANTON, PA.



Wrecked by a mine cave on August 29, as school was to open a week later. Had this occurred a few days later, when 500 pupils were assembled for classes, a panic would have resulted. The total damage of this cave is estimated at \$50,000.

GRAVES OF THE DEAD ROCKED BY MINE CAVES



The last resting place of a well known Scranton, Pa., woman, whose grave was torn open, a few weeks after burial, by a mine cave, in Cathedral Cemetery, where hundreds of bodies have been dropped into the mine beneath. The casket is shown in the pit, torn asunder, and the hand of the corpse is seen protruding from the burial case.

LADDER FROM THIRD STORY WINDOW SAVED THESE LIVES



When the home of Mr. and Mrs. Buckley, Ross Avenue, Scranton, dropped into a mine cave at an early hour in the morning, they reached the surface by the means of a ladder from the attic window before flames destroyed the building and all of their possessions in the pit beneath. They saved their lives, but lost THEIR ALL.